

Be the change.

Do you believe in second chances?



WHO ARE WE?

Hearts and Homes is an experienced team of child welfare professionals. For 50 years we have inspired youth to gain confidence, understand stability, build emotional strength, learn life skills, and learn to love again. Our parents serve as leaders, challenging our youth to move beyond a troubled past and create a successful future. We provide the information, resources, and training for us to all make a difference in our community.

Visit heartsandhomes.org

2014 WE SERVED 306 CHILDREN

10.34%	Prince George's	26.76%	Baltimore City
9.31%	Montgomery	5.15%	Baltimore County
5.17%	Baltimore City	1.3%	Anne Arundel
4.14%	Baltimore County	1.3%	Howard
1.3%	Queen Anne	1.3%	Montgomery

*TFC is a specialized program for children 0-21 (average age: 13-17 yrs. old) with emotional, behavioral, educational or psychological needs who are unable to live with their biological families. Specially recruited, screened, trained and licensed foster families provide care in their own homes.

* Damamli is a foster care and independent living preparation program for pregnant teens and teen mothers. Through a three-phased support system, the Damamli program educates and prepares teens to live as independent, thriving mothers.

REASONS CHILDREN ENTER FOSTER CARE

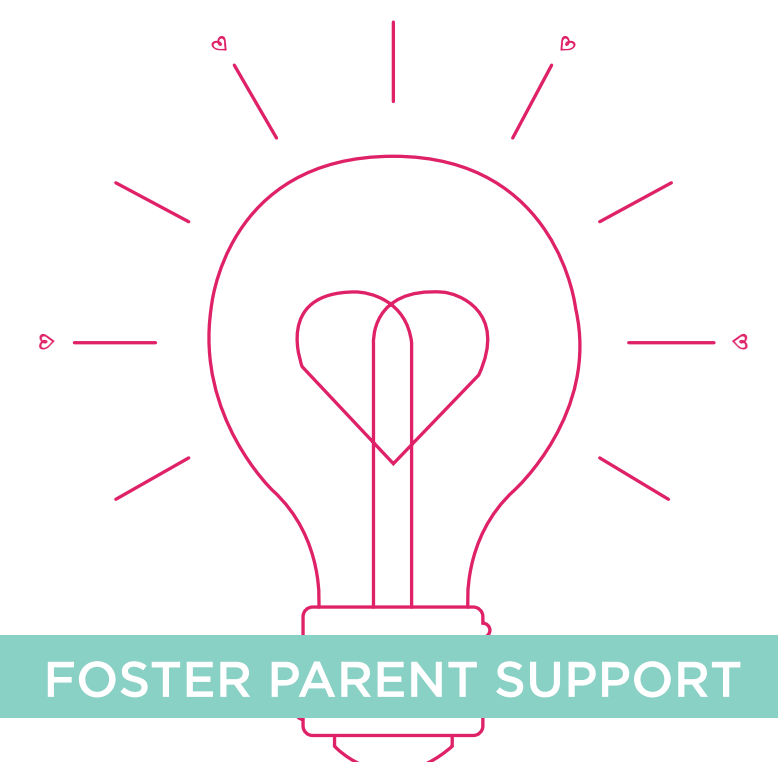


CHILDREN UNDER 18 LIVING IN FOSTER CARE



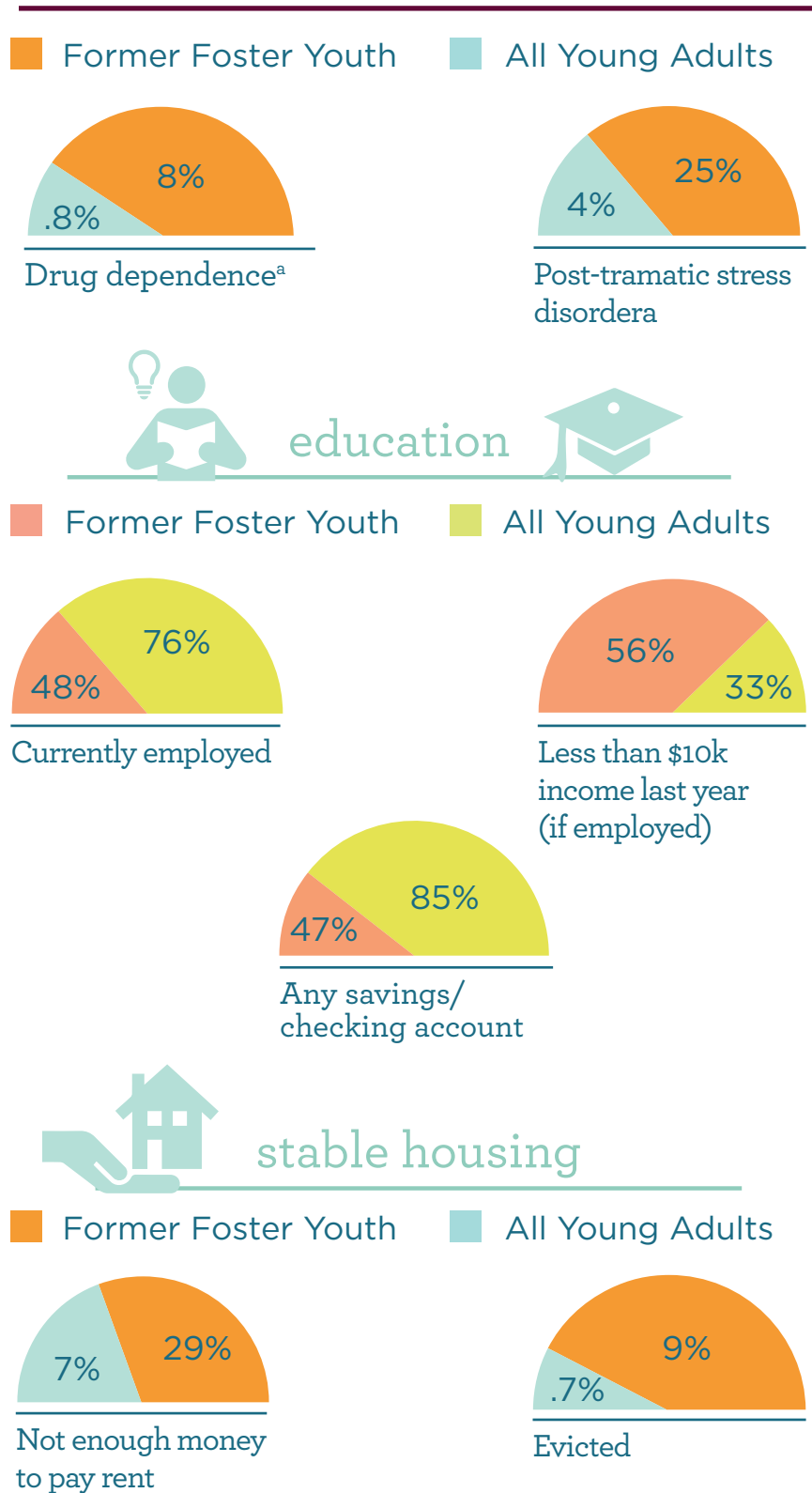
CHARACTERISTICS OF FOSTER PARENTS:

- Like children
- Are prepared for surprises
- Use open communication
- Have good emotional survival skills
- Will advocate for the child when necessary
- Can cope with rejection and anger
- Realize that not all problems can be overcome
- Enjoy the challenges of parenting
- Can express love and trust
- Can handle stress and change
- Have a sense of humor
- Have a flexible lifestyle
- Have flexible expectations
- Have patience and a desire for learning and self-growth
- Can accept a child with a history



- Pre-placement training
- Family recreational activities
- Frequent home visits
- Respite relief
- 24-hour crisis intervention
- Financial compensation
- On-going training
- A community of peers
- Referrals to community resources

OUTCOMES OF FORMER FOSTER YOUTH IN THEIR EARLY TWENTIES COMPARED TO THE GENERAL POPULATION OF YOUNG ADULTS



EVERY MONTH IN MARYLAND

